

Waiver Transportation Program

Presentation and Discussion with the
Minnesota Council on Transportation Access

John Harper & Sheila Holbrook-White

January 2023





Agenda

Setting the Foundation

Current Services

Moving Forward

Next Steps

Discussion

Setting the Foundation



Setting the Foundation

Medicaid/Medical Assistance (MA)

Element	Medicaid
Who's Covered	Assistance program that covers medical costs of no- and low-income families and individuals
Eligibility	Means-Tested: Income and asset limits
Governance & Funding	<ul style="list-style-type: none">• Administered by states, in compliance with core federal requirements;• Jointly funded by states and the federal government.
Program Administration And Covered Services	<ul style="list-style-type: none">• States must provide certain mandatory benefits to core populations.• States have discretion to determine how to provide covered services and set provider rates.• States may expand the array of benefits and covered populations, including <i>waivers</i>

Medicaid Waivers: How They Work

**Minnesota DHS
applies for
permission to
provide
Medicaid waiver
services**

**CMS rules on
the application**

**Minnesota DHS
manages
waivers
centrally**

**Lead Agencies
serve as on-the-
ground
connectors**

**Selected
Providers
Deliver or
Facilitate
Services**

Minnesota's Home & Community-Based Services (HCBS) Waiver Programs

Brain Injury (BI)

Children and adults, ages 64 and younger, with acquired or traumatic brain injuries who need the level of care provided in a specialized nursing facility or a neurobehavioral hospital

Community Access for Disability Inclusion (CADI)

Children and adults, ages 64 and younger, who require the level of care provided in a nursing facility

Developmental Disabilities (DD)

Children and adults across the lifespan with a diagnosis of a developmental disability or a related condition who need the level of care provided in an Intermediate Care Facility (ICF)






Community Alternative Care (CAC)

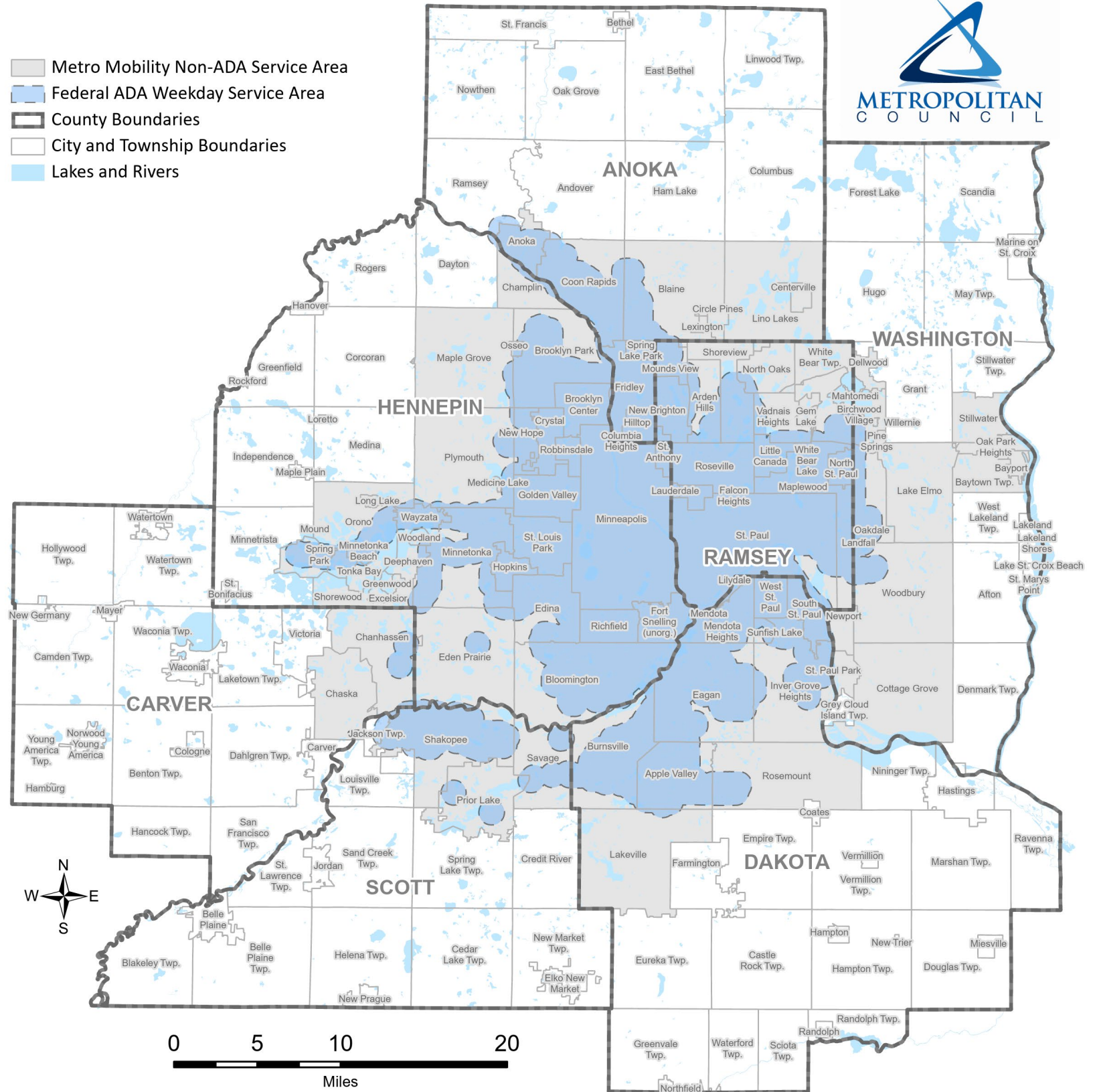
Children and adults, ages 64 and younger, who are chronically ill or medically fragile and require the level of care provided in a hospital

Current Services



Metro Mobility Service Area

-  Metro Mobility Non-ADA Service Area
-  Federal ADA Weekday Service Area
-  County Boundaries
-  City and Township Boundaries
-  Lakes and Rivers



Current Services for Individuals Participating in Day Support Programs

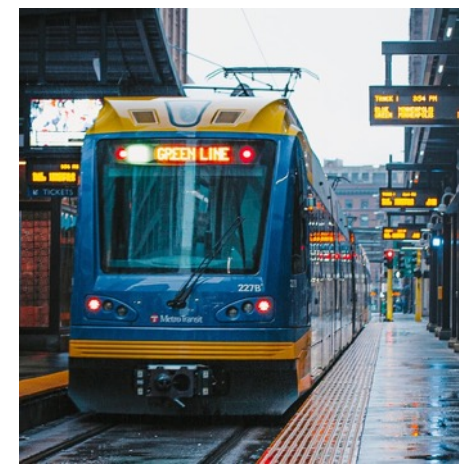
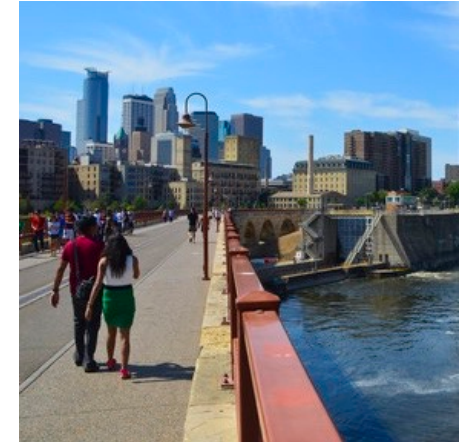
Agency and Demand Contracts

Agency Contract

- Currently includes the region's 9 largest Day Support Services – only ADA trips are eligible
- Considered “premium” because:
 - All standing orders
 - Static driver assignments

Demand Contracts

- Both non-routine trips (scheduled up to four days in advance) and standing orders
- Standing orders for ADA trips only
- Only option for Day Support Services *not* served through the Agency contract



Waiver Transportation Program

History

2015:

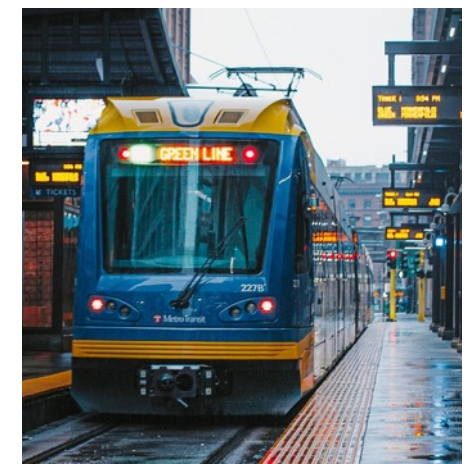
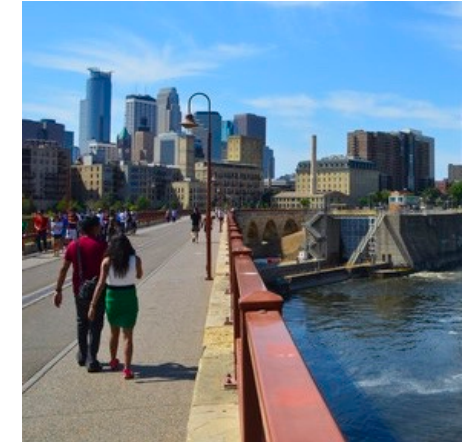
- Multiple meetings with DHS to explore opportunity
- Regulatory language conflicts
- DHS bundled rates for transportation and program

2018:

- Statutory language allows data sharing between DHS and Met Council

2021:

- DHS unbundled transportation from program rates
- Transportation can be paid at fair market rate
- July – DHS approves application for Home and Community Based Services
- November – Waiver transportation program manager hired to launch effort



Moving Forward



Waiver Transportation Program

Context

- The Council plans to sunset the Agency Contract in 2024.
- The Council will launch Waiver Transportation in 2024.
- Current Metro Mobility demand contracts and services remain unchanged.

Waiver Transportation Program

Service Principles

To connect persons with disabilities to the lives they desire in their communities

<p>Provide high-quality, predictable connections to covered services for waiver participants</p>	<ul style="list-style-type: none"> • Service throughout the Metro Mobility Service Area • Evening service • Weekend service
<p>Supports Minnesota Olmstead Plan Transportation Goal</p>	<ul style="list-style-type: none"> • Access to reliable, cost-effective, and accessible transportation services • Robust connections to services, supports, and resources
<p>Advances the 2020 Twin Cities Public Transit and Human Services Transportation Coordinated Plan</p>	<ul style="list-style-type: none"> • Furthers regional priorities to: <ul style="list-style-type: none"> ○ “Seek opportunities to use existing funding sources more broadly,” ○ “Increase off-peak services,” and ○ “Expand services for persons with disabilities beyond current service hours and area”
<p>Advances 2018 Metro Mobility Task Force Report recommendations</p>	<ul style="list-style-type: none"> • Implements recommendations from legislatively-mandated Report to: <ul style="list-style-type: none"> ○ “Maximize all potential funding sources,” ○ Create a service specifically for "individuals receiving waiver services," and ○ “Evaluate options for increased flexibility”



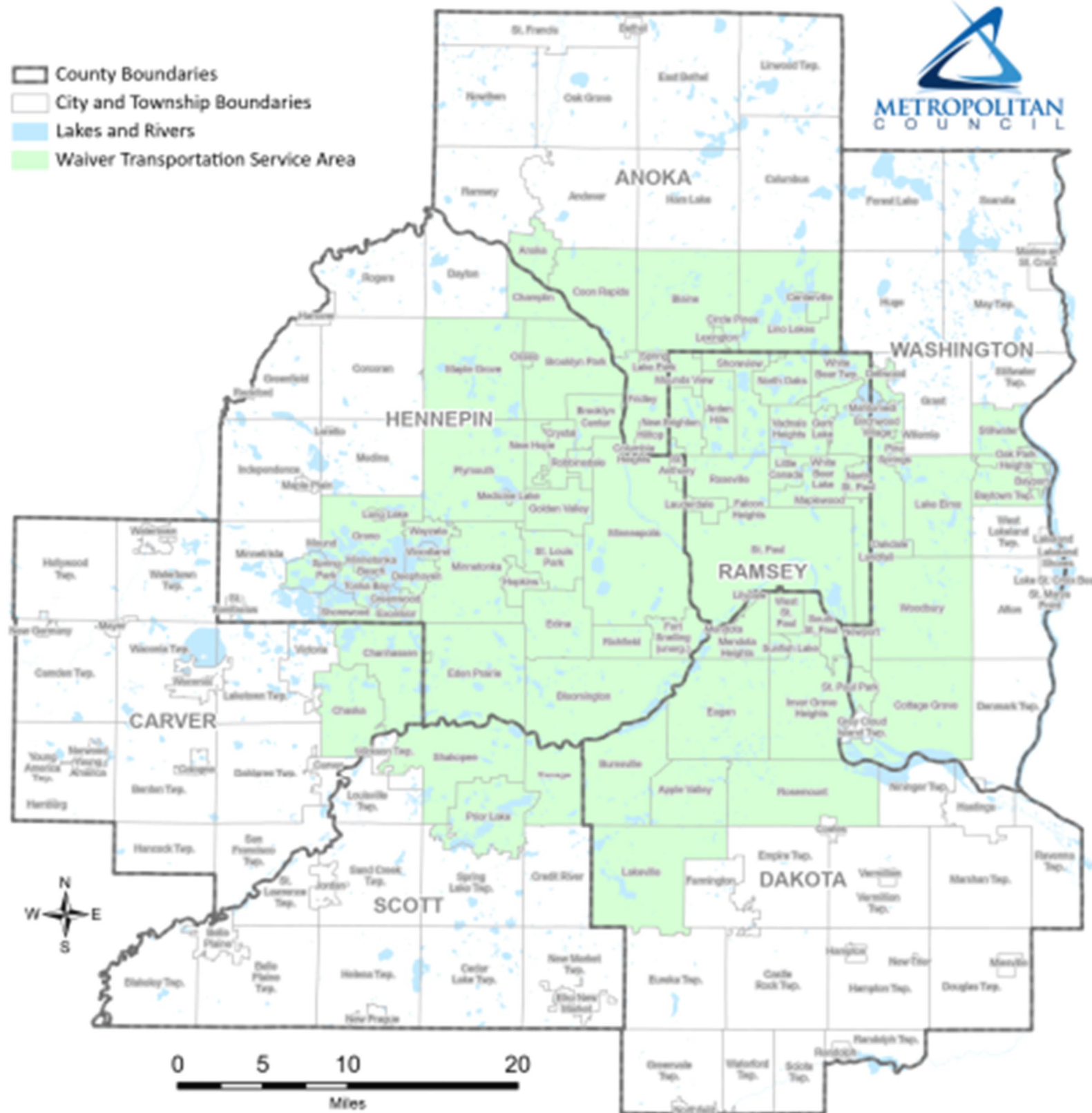
Waiver Transportation Program



Premium Features

- One Program, Multiple Waiver-Eligible Purposes
- Expanded Days and Hours of Service
- Expanded Access to the Service Area
- Expanded Standing Order Options

Waiver Transportation Service Area



Waiver Transportation Program

Premium Features

- One Program, Multiple Waiver-Eligible Purposes
- Expanded Days and Hours of Service
- Expanded Access
 - All locations receive same service level
 - Standing order option for all
- Fare-Free Travel
- Single Point of Contact
- No Metro Mobility Application, Certification, or Re-Certification
- First-Door through First-Door Escort
- ADA-accessible Vehicles

Waiver Transportation Program

Funding Principles

To offset expenses otherwise funded by the state's general fund contribution

Preserve § 5307 funding eligibility	Provides federal formula funds that offset the state's general fund contribution
Maintains available forecasted budget as local share	Uses either Metro Mobility forecasted budget (starting FY 2025) or DHS forecasted budget to cover state match.
Furthers strategic priorities of the 2020 Twin Cities Public Transit and Human Services Transportation Coordinated Plan	High-Priority Strategies: <ul style="list-style-type: none">• “Seek opportunities to use existing funding sources more broadly” (33)
Secures other funding where needs and services are aligned	Explores, pursues, and secures other resources that enhance access to the community

Waiver Transportation Program

Financial implications

	STATE		FEDERAL		
Per Ride Breakdown	State General Fund Contribution	DHS Contribution	DHS Federal Share	Council 5307 Federal Formula	Total
Current Services	\$20	\$2	\$2	\$4	\$28
Waiver Services	\$4	\$10	\$10	\$4	\$28

Increases federal funding to offset Metro Mobility expenses otherwise funded by the state's general fund

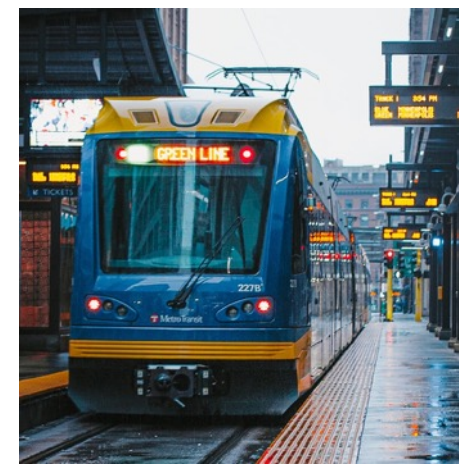
Next Steps



Waiver Transportation Program

Working Plan – Current January 2023

- **2023 - Q1:** Outreach to disability-serving agencies and county staff to gauge participant interest in the waiver transportation program
- **2023 - Q2:** Release RFP for waiver transportation program and establish program branding
- **2023 - Q3-Q4:** Coordinate administrative details with county staff
- **April 1, 2024:** Begin phased delivery of waiver transportation
 - Shift current Agency riders to waiver or to demand
 - Shift current Demand riders to waiver
 - New riders
- **2024 Q2-Q3:** Sunset Agency Contract



Discussion





John Harper

Contracted Transit Services Manager
Metropolitan Transportation Services
John.Harper@metc.state.mn.us

Sheila Holbrook-White

Waiver Transportation Program Manager
Metropolitan Transportation Services
Sheila.Holbrook-White@metc.state.mn.us

