

An aerial photograph of a two-lane road curving through a dense forest. The trees are in various stages of autumn, with some showing bright yellow and orange, while others remain green. A white car and a red car are visible on the road. The image is partially obscured by a dark green circular graphic on the left side.

Northwest Regional Development Commission

Region Transportation Coordination Council

Lynnell Simonson Popowski
Mobility Manager / RTCC Coordinator

Overview

- What Is An RTCC?
- NWRTCC
- Local Issues
- Open Discussion



Overview



Minnesota Council On Access (MCOTA)

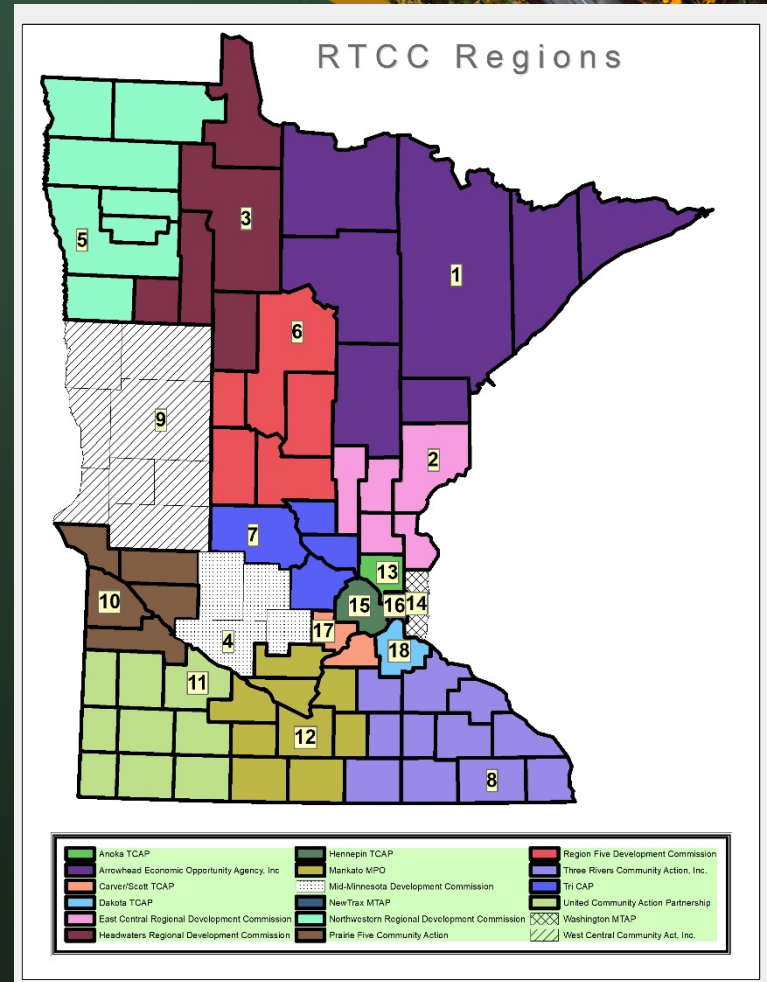
- Formed in 2010 By Statue
- "study, evaluate, oversee, and make recommendations to improve the coordination, availability, accessibility, efficiency, cost-effectiveness, and safety of transportation services provided to the transit public."
- 13 State Agencies & Organizations
- 5 Key Issue Areas



2018
Creation of Regional
Transportation Coordination
Councils

Regional RTCC Organizations

- | | |
|---------------------|-----------------------|
| 1. Arrowhead | 10. Prairie Five CAP |
| 2. East Central RDC | 11. United CAP |
| 3. HRDC | 12. Mankato MPO |
| 4. Mid-MN RDC | 13. Anoka TCAP |
| 5. Northwest RDC | 14. Washington MTAP |
| 6. Region 5 RDC | 15. Hennepin TCAP |
| 7. Tri-Cap | 16. New Trax |
| 8. Tree Rivers CAP | 17. Carver/Scott TCAP |
| 9. West Central CAP | 18. Dakota CAP |



Northwest RTCC



GOALS

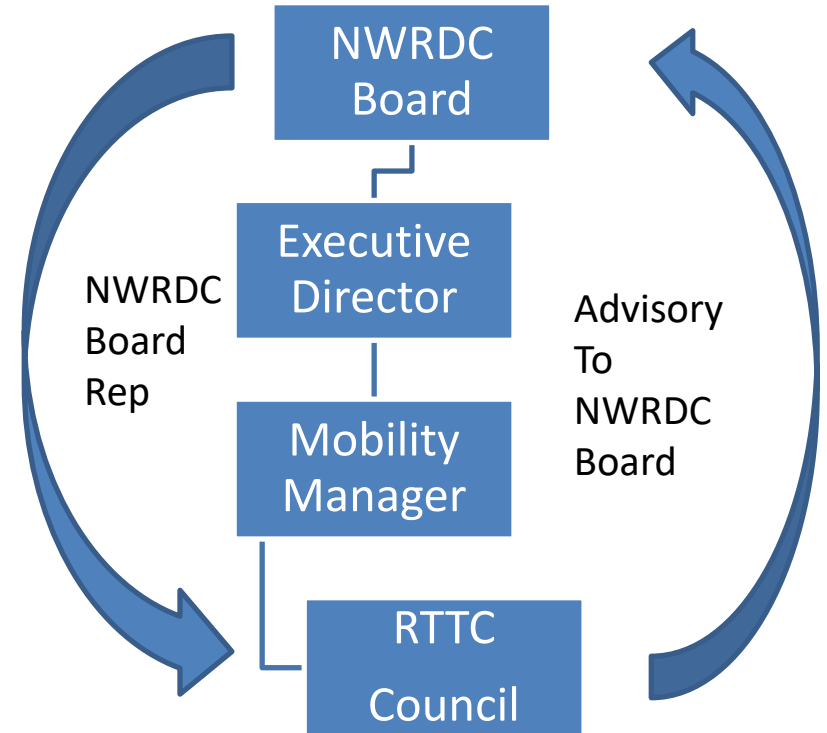
- Expand transportation options for underserved populations
- Develop better collaboration between transportation providers within the region
- Be a central source of public transportation information
- Provide planning and strategic expertise to transportation providers and service agents
- Reduce public transportation cost through new efficiencies and partnerships

Mobility Management

- Right People
- Right Place
- Right Time
- Right Service Delivery

Northwest RTCC Structure

- Diverse Organizational Groups
- Meet Bi-Monthly
- Serve As Eyes & Ears Of Transportation Issues
- Technical Advisory To NWRDC Board

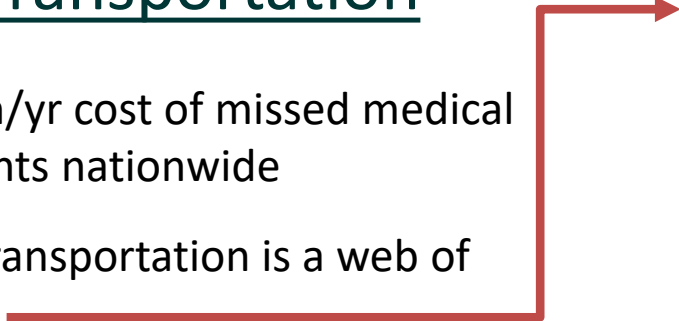


Regional Issues



Medical Transportation

- \$150 billion/yr cost of missed medical appointments nationwide
- Medicaid transportation is a web of regulations
- Lack of area medical services
- Hospital Discharges
- Transportation to Fargo/Mayo/Twin Cities ->Chronic Condition = Relocation

- 
- Mode 1 – Personal mileage reimbursements
 - Mode 2 – Volunteer driver mileage reimbursements (curb-to-curb)
 - Mode 3 – Unassisted transport (curb-to-curb) may include taxi, bus, light rail, other commercial carriers and airfare
 - Mode 4 – Assisted transport (door-to-door and door-through-door) may include taxi, bus, light rail, other commercial carriers
- Protected Transportation
Specialized Transportation Services (STS)

Regional Issues

An aerial photograph showing a two-lane road winding through a forest with vibrant autumn foliage in shades of yellow, orange, and red. A white van and a red car are visible on the road. The top left corner of the slide features a dark green background with the title text.

Roseau County Medical Transportation

- New Volunteer Driver Program
- Using Accessible Vehicle
- Local volunteers
- Rides to Roseau medical appointments

Regional Issues

An aerial photograph showing a two-lane road winding through a forest. The trees are in autumn, with many yellow and orange leaves. A white car is driving on the road, and a red car is parked on the side. The road is bordered by a yellow curb on the left side.

Polk County Behavioral Health Transportation

- New Volunteer Driver Program
- Employer based volunteer program
- Sharing accessible van from local service provider
- Rides to Alluma medical appointments

Regional Issues

Volunteer Drivers

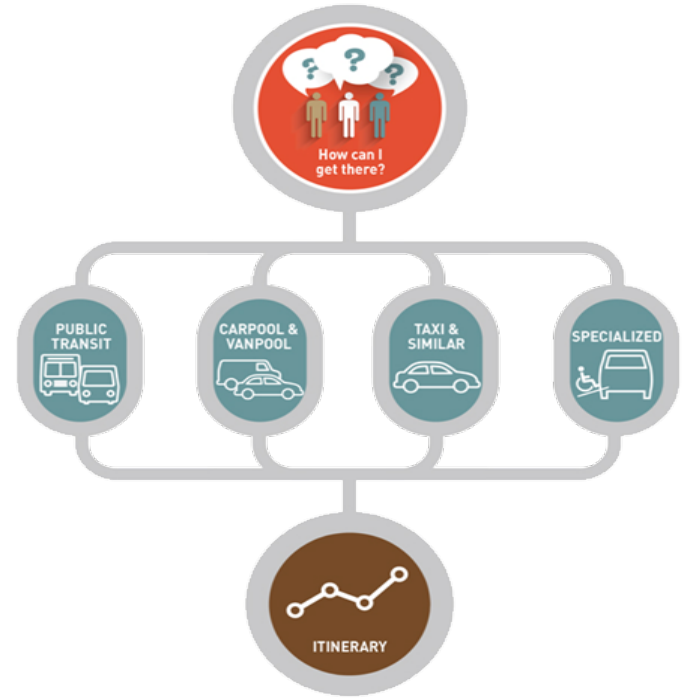
- “Backbone” of Rural Mobility
- Limited Availability
- Reimbursement Rates
- Lack of Non-Medical Options
- Silos



Projects In Development

One-Call/One Click System

- Centralized Resource For Transportation Information
- Mobility Management Center
- General Public & Service Agencies
- Mobility As A Service
 - Personalized Trip Planning
- 3-5 years in the future



Projects In Development

Volunteer Driver Improvements

- Recruitment Event
- Centralized Information
- Grocery Delivery Service
- Volunteer Driver Membership Program?
- Coalition Across The State
 - IRS Regulations
 - Insurance Regulations
 - Reimbursement Rates



Projects In Development


An aerial photograph of a two-lane road winding through a forest with vibrant autumn foliage in shades of yellow, orange, and green. A white car is driving away from the viewer, and a red car is driving towards the viewer.

Bringing Lyft to Roseau County

- Community Engagement
- Driver Training
- Rider Training
- Trainers in the community

So What Does This Mean?

An aerial photograph of a two-lane road winding through a forest with vibrant autumn foliage in shades of yellow, orange, and green. A white car and a red car are visible on the road. The image is partially obscured by a dark green curved shape on the left side of the slide.

- Efficiency Of Public Services
 - Enhanced Mobility Options For Citizens
 - Opportunity Increased For Mobility Funding
 - Save \$\$\$
 - Increased representation at the state level
- 
- A solid blue vertical bar is positioned on the right side of the slide, extending from the top of the list area down to the bottom.